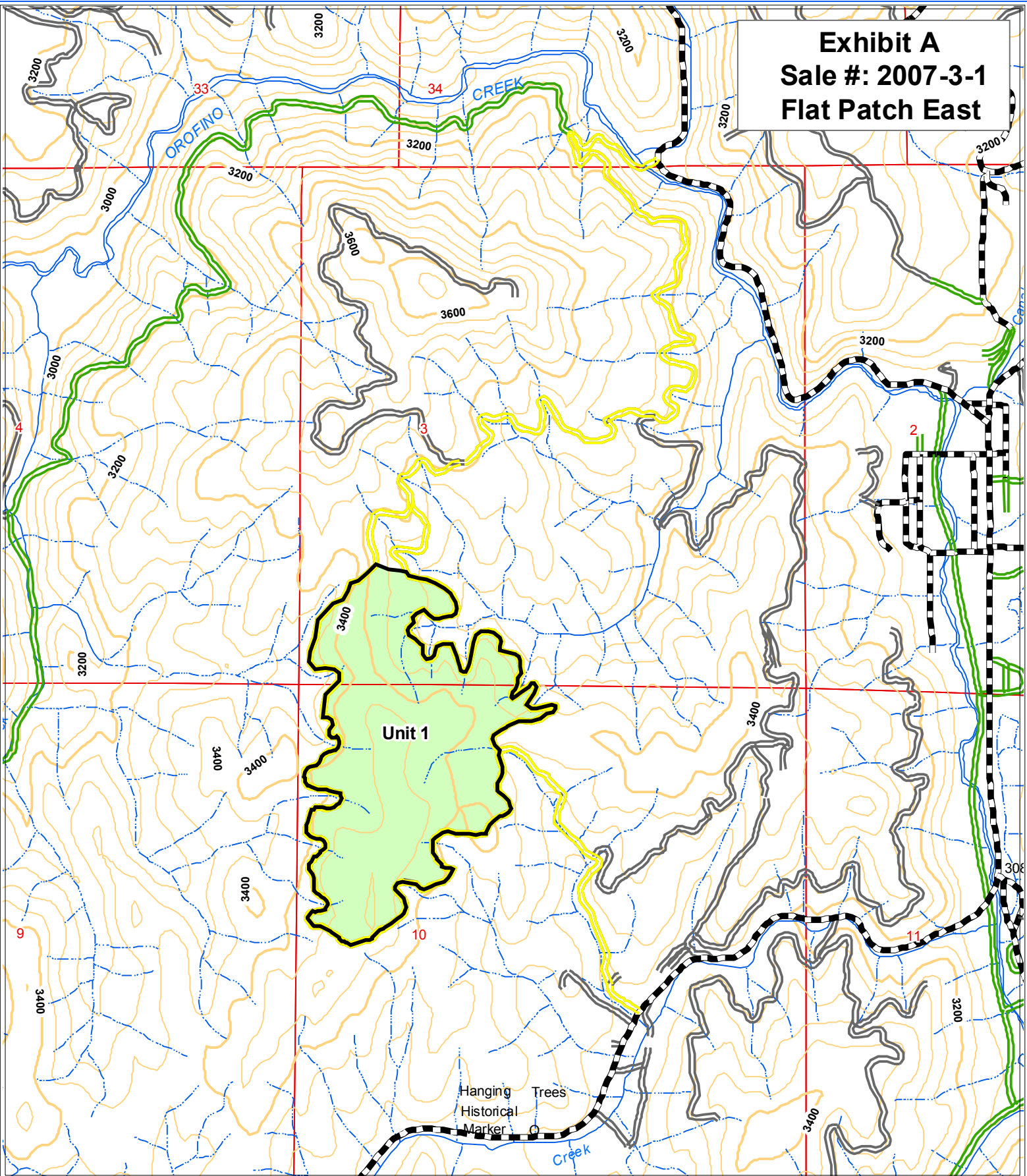


**Exhibit A**  
**Sale #: 2007-3-1**  
**Flat Patch East**



Timber Sale Boundary	Retention (No Harvest)	Class 1 Stream	<b>Lat: 46° 28' 57.7" N</b>
Cat Skid	Haul Road - Buyer Maintained	Class 2 Stream	<b>Long: 115° 49' 26.4" W</b>
Line Skid	Haul Road - County Maintained	Contour, 40 ft interval	0 500 1,000 Feet
Line Skid / Adverse Shovel	Paved Road	Heliport	N
	Primary Road		
	Secondary Road		